



# DV4 SERIES

Gas Turbine Drain Valve  
(Internal Switch)



**YOUR CREATIVE ENGINEERING PARTNER**

# DV4 SERIES

## Gas Turbine Drain Valve (Internal Switch)

These valves were developed for gas turbine control applications but they may be suitable for use in similar harsh environments. The DV4 series is used to drain unburnt fuel in case of a failed turbine start or to drain water after washing operations. DV4 is normally open. The actuator is pneumatic with spring return and is integrated into the valve body. The valves are suitable for use with combinations of particulate fuel combustion products, diesel/paraffin type fuel, de-mineralised water and detergent. Valve position is shown by mechanical visual/tactile indicators. DV4 can be supplied with switches to indicate fully open or fully closed. Each switch can be duplicated. Ingress Protection: IP66.



## HIGHLIGHTS

- > Suitable for high temperatures and harsh environments
- > Large bore for high flow rates
- > Stainless steel construction
- > Wide range of hazardous area and regional approved switch options
- > ATEX Approval - Zone 2

## IDEAL USES

- > Gas turbine control systems
- > Fuel systems
- > Wash systems

+70°C

Maximum Working Pressure  
**31**  
barg  
(450 psig)

Nominal Pressure  
**24**  
barg  
(348 psig)

Cv  
**19**

## FEATURES AND SPECIFICATIONS

1. 316 Stainless Steel Body
2. Port Actuation
3. Inlet Port
4. Outlet Port



### OTHER OPTIONS

- > **Position Switches:** DV4 can be supplied with switches to indicate fully open or fully closed.
- > The switches are hermetically sealed.

### STANDARD MATERIALS

- > **Body:** Stainless Steel 316
- > **O Rings:** Viton
- > **Seat:** Copper
- > **Diaphragm:** Viton

## PRODUCT SPECIFICATION DATA

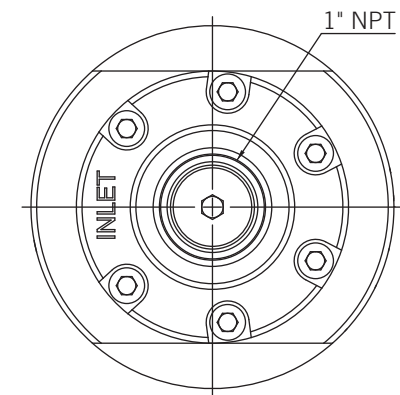
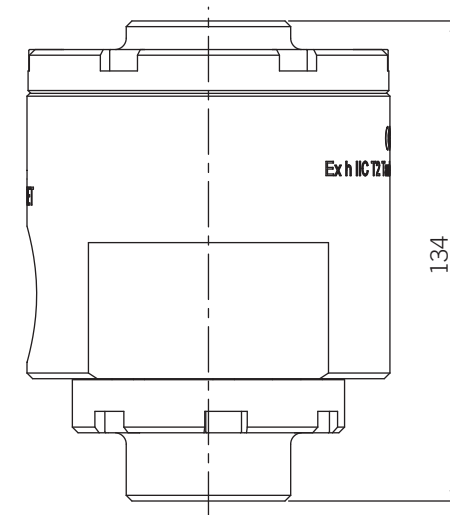
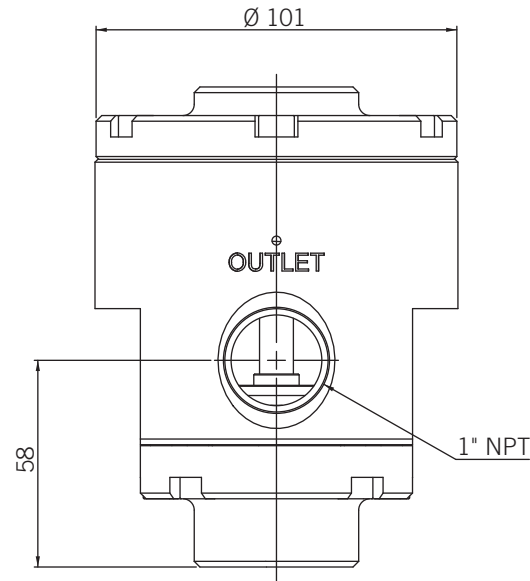
	DV AUTO DRAIN VALVE
<b>Nominal Bore</b>	24 mm (15/16")
<b>Max Working Pressure</b>	31 barg (450 psig)
<b>Nominal Pressure</b>	24 barg (348 psig)
<b>Valve Shut Pressure</b>	1.4 barg (24 psig)
<b>Inlet &amp; Outlet Ports</b>	1" NPT female
<b>Pilot Port</b>	1/4" NPT
<b>Medium</b>	Combinations of particulate fuel combustion products, diesel/paraffin fuel, de-mineralised water and detergent
<b>Ambient Temperature Range</b>	See switch data
<b>Cv</b>	19

# PRODUCT ORDERING & DIMENSIONS (IN MM)

## PRODUCT ORDERING INFORMATION

When placing an enquiry please advise the following:

- > Maximum Working Pressure
- > Flow Medium
- > Switch Configuration
- > Operating and Storage Temperature Ranges
- > Certification and QA Requirements



ORDERING CODE	TYPE	Temp
NC53026	No Switches	-20 / +250°C
NB60117-1	Two Switches	-20 / +200°C
NB60117-2	Single Bottom Switch	-20 / +200°C
NB60117-3	Single Top Switch	-20 / +200°C