



SERIES RH65

Dome Loaded Regulator (DN80)



YOUR CREATIVE ENGINEERING PARTNER

SERIES RH65

Dome Loaded Regulator

Series RH65 is a Dome Loaded Pressure Regulator providing accurate pressure control for high flow applications. The RH65 requires a pilot regulator to load the dome to the required set point.

The RH65 can be supplied with an appropriately sized Inlet Filter (T Series) to prevent contamination of the seat and with an upstream Slam Shut Valve (ASV Series) to provide over-pressure protection of the downstream system.

HIGHLIGHTS

- > High Flow Capacity - Cv 30.0
- > High accuracy pressure control
- > Stable in high pressure drop / low flow applications.

IDEAL USES

- > Fuel Gas / Biomethane High Flow Systems
- > Combustion Testing Systems
- > High flow industrial gas applications
- > Research & Development Test Bench Applications.



RH65 – DOME LOADED REGULATOR

**Cv
30**

**Maximum
Working
Pressure:
450
barg
(6500 psig)**

Features and Specifications

1. External Piloting

The external piloting port is used to pressurise the dome to achieve its desired outlet pressure.

2. Diaphragm

The large diaphragm ensures sensitivity, accuracy and stability. The loads carried by the diaphragm result in a very high friction / force ration. Essential for excellent for pressure control.

3. Seat Cartridge

Factory Acceptance Tested Valve Seat Cartridges allow for easy replacement in field servicing.

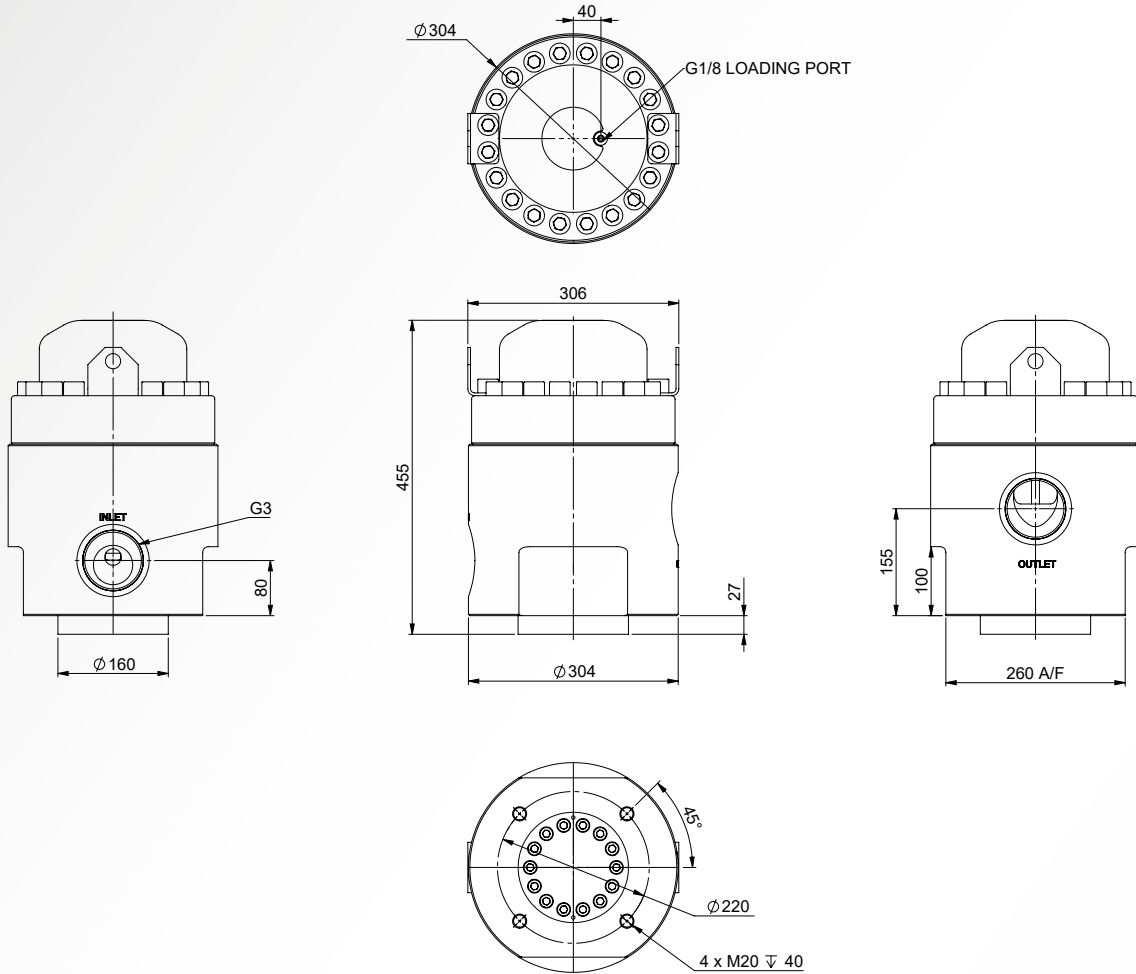


Product Specification Data

Series RH65	RH65 Mk1	
Function	Pressure Control	
Media	Gases and Hydraulic Fluid	
Inlet Rating	12 - 450 barg (174 - 6525 psig)	
Outlet Rating	5 - 55 barg (72 - 800 barg)	
Cv	30.0	
Leakage	Bubble Tight	
Testing	Optional Helium leak testing available upon request	
Temperature Range	-20°C to +70°C (-4°F to +158°F)	
Process Port Size	3"	
Process Port Type	ISO G	
Optional Port Types	ASME / ISO Flange or Weld Pipe Interface	
Materials of Construction	Stainless Steel	
Weight	175 kg	180 kg

* Low pressure option also available. For special requirements, please contact sales@halehamilton.com

Ordering Information & Installation Dimensions



Ordering Information

When placing an enquiry, please advise the following:

- > Inlet Pressure Range
- > Outlet Pressure Range
- > Fluid Type
- > Fluid Temperature Range
- > Ambient Temperature Range
- > Application Details
- > Any Special Requirements (Materials, etc.).

Type	Ordering Code
RH65 Mk1 (12 - 450 barg)	N125921 - 1
RH65 Mk1 (5 - 55 barg)	N125921 - 2
RH65 Mk2	N125963