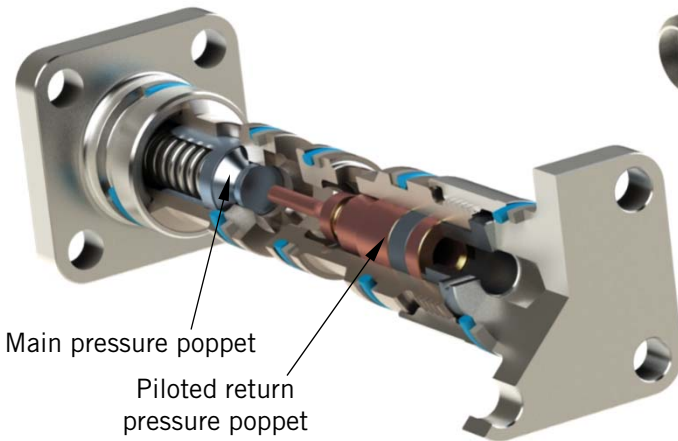
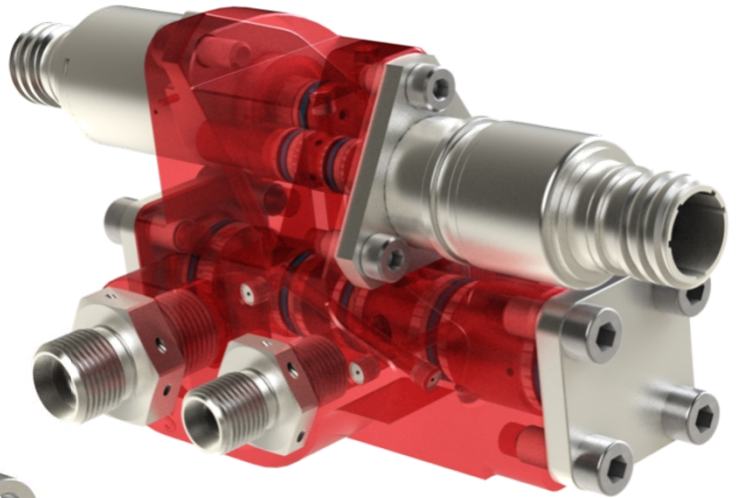


DX family MANIFOLDS Integrated Technologies

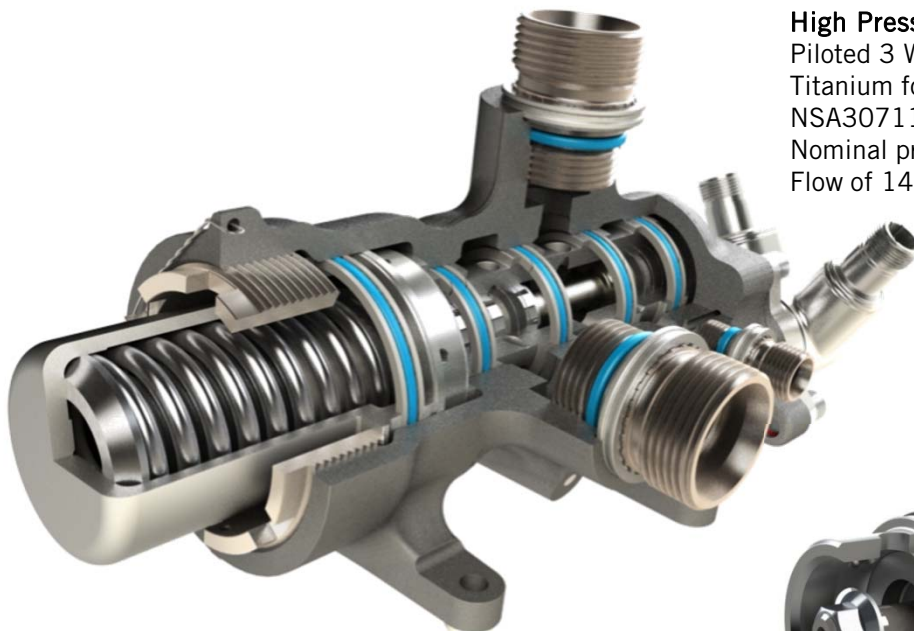


High Pressure Poppets Valve manifold
Piloted 3 Ways, 2 positions distributor
7175 Aluminium body.
MIL-PRF-87257 fluid.
Nominal pressure of 206 bar.
Flow of 15l/min, pressure drop of 105 bar.

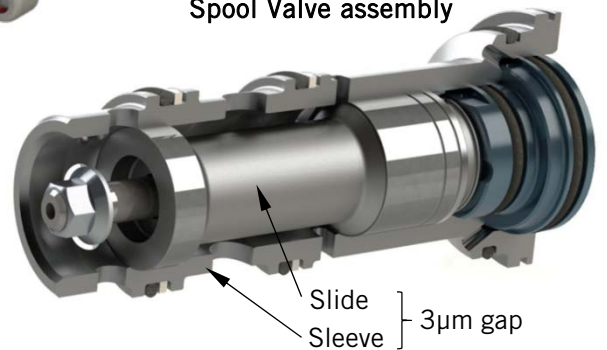


Poppets line assembly

High Pressure Spool Valve manifold
Piloted 3 Ways, 2 positions distributor
Titanium forged body.
NSA307110 fluid.
Nominal pressure of 350 bar.
Flow of 149l/min, pressure drop of 4 bar.



Spool Valve assembly

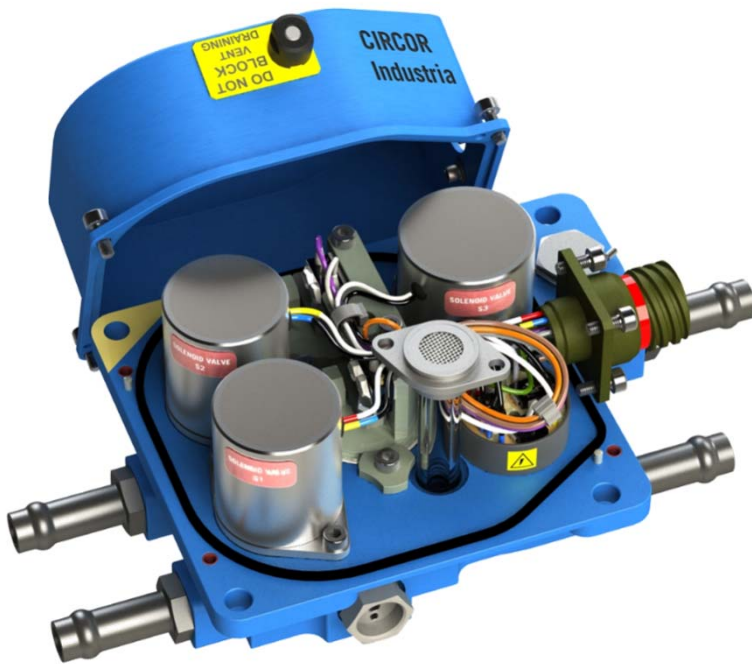
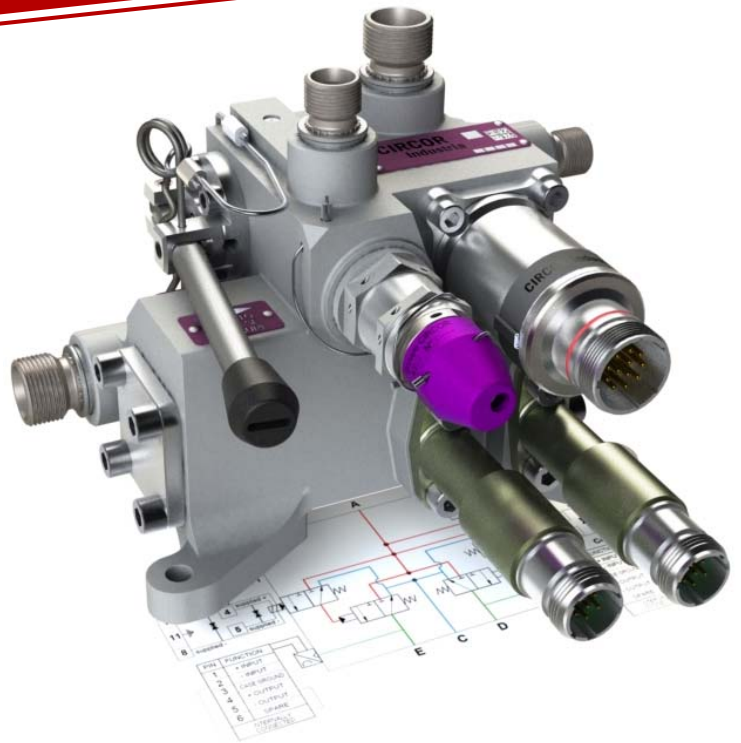


DX family MANIFOLDS Integrated Technologies



High Pressure Manifold

- NSA307110 fluid.
- 1 Pressure Solenoid Valve.
- 1 High Flow 3/2 poppets line.
- 2 Pressure Switches.
- 1 Pressure Relief Valve.
- 1 Manual Relief Valve.
- 6 inlet / outlet pressure fluid ports.
- Dimensions 180x180x145 mm, weight 2,975 Kg



Low Pressure Air Manifold

- 2 Pressure Solenoid Valve 2/2NC.
- 1 Pressure Solenoid Valve 3/2NC.
- Very High Tightness by overmolding poppets.
- 1 Pressure Switch.
- 1 Vacuum Switch.
- 1 Pressure Relief Valve.
- 1 Flapper Valve.
- 1 Air Filter
- 4 inlet / outlet pressure air ports.
- Dimensions 182x97x94 mm, weight 1,270 Kg



Spool Valve 3 ways, 2 positions Mechanical Activation

