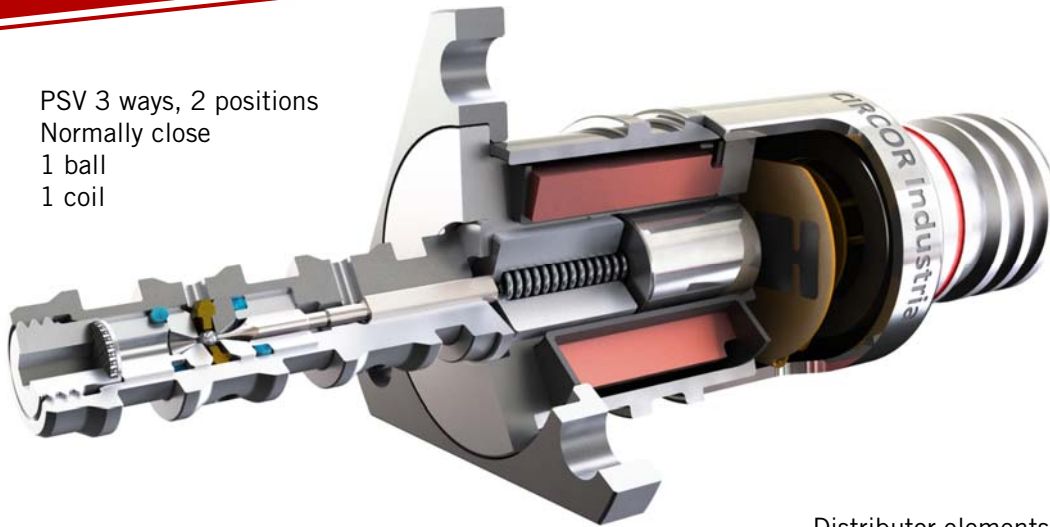


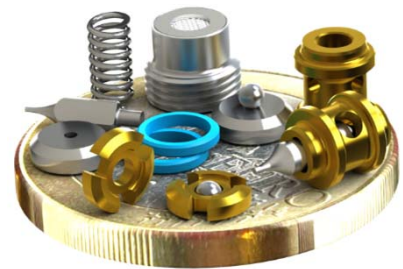
EV family PRESSURE SOLENOID VALVE (PSV) Fluid Control



PSV 3 ways, 2 positions
Normally close
1 ball
1 coil



Distributor elements
- Real size -



2 coils
PSV

Applications/ Features:

- All configurations available:
Normally Open, Normally close.
2 Ways, 2 Positions, 3 Ways, 2 Positions.
1 coil or 2 coils (electrical redundancy).
- Low pressure to 350 bar and more.
- Low leakage (about 5 drops / min).
- Seat diameter from 0,6 to 2 mm.
- Flow rate upper than 2 l/min (pressure 206 bar).
- All aircraft fluid.
- High life cycle (until 3.000.000 cycles)
- Certification: RTCA/DO-160, MIL-STD-810.
- Connection: Wire leads or connectors EN2997, MIL-C-38999...
- Working fluid temperature: -55°C to +135 °C.







PSV 3 ways, 2 positions
Face mounting interface



EV family "MINI" PRESSURE SOLENOID VALVE Standard configurator



Table I - CONFIGURATIONS

SOLENOID TYPE		MOUNTING TYPE		
S	 <p>90° EXIT WIRES</p> <p>VOLTAGE RANGE: 12 to 32 Vdc</p> <p>COIL RESISTANCE: 50 Ohm</p> <p>CURRENT CONSUMPTION: 1A Max @ 32Vdc/-40°C ± 400 mm AWG24 wire DR25 Heat shrink tube</p>	Diamond Shape	Triangle Shape	Nut
		 <p>D</p> <p>2 holes Ø4,2 Titanium TA6V</p>	 <p>T</p> <p>3 holes Ø4,4 Stainless steel Aisi431</p>	 <p>N</p> <p>1-20 UNJEF 3A Aluminium alloy 2024</p>
F	 <p>FRONT FACE EXIT WIRES</p> <p>VOLTAGE RANGE: 12 to 32 Vdc</p> <p>COIL RESISTANCE: 50 Ohm</p> <p>CURRENT CONSUMPTION: 1A Max @ 32Vdc/-40°C ± 400 mm AWG24 wire DR25 Heat shrink tube</p>	DISTRIBUTOR TYPE 3 WAYS – 2 POSITIONS		
		<p>32</p> <p>Normally close</p>  <p>NC</p>	<p>Normally open</p>  <p>NO</p>	<p>FLUIDS: MIL-H's, Skydrol's, Air ...</p> <p>NOMINAL PRESSURE: 10 to 210 bars</p> <p>MINIMUM FLOW RATE: 1,5 l/min @ 206 bar (MIL-H)</p>
C	 <p>ELECTRICAL CONNECTOR</p> <p>VOLTAGE RANGE: 12 to 32 Vdc</p> <p>COIL RESISTANCE: 50 Ohm</p> <p>CURRENT CONSUMPTION: 1A Max @ 32Vdc/-40°C</p>	DISTRIBUTOR TYPE 2 WAYS – 2 POSITIONS		
		<p>22</p> <p>Normally close</p>  <p>NC</p>	<p>Normally open</p>  <p>NO</p>	<p>FLUIDS: MIL-H's, Skydrol's, Air ...</p> <p>NOMINAL PRESSURE: 10 to 210 bars</p> <p>MINIMUM FLOW RATE: 1,5 l/min @ 206 bar (MIL-H)</p>

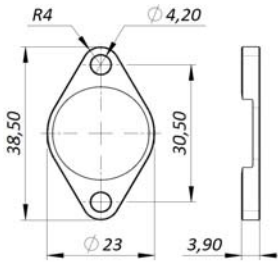


EV family "MINI" PRESSURE SOLENOID VALVE Standard configurator

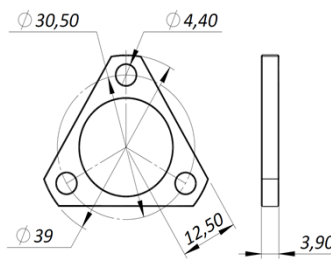


Table II - DIMENSIONS

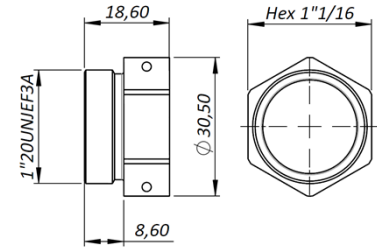
FLANGE and NUT



Diamond Shape D

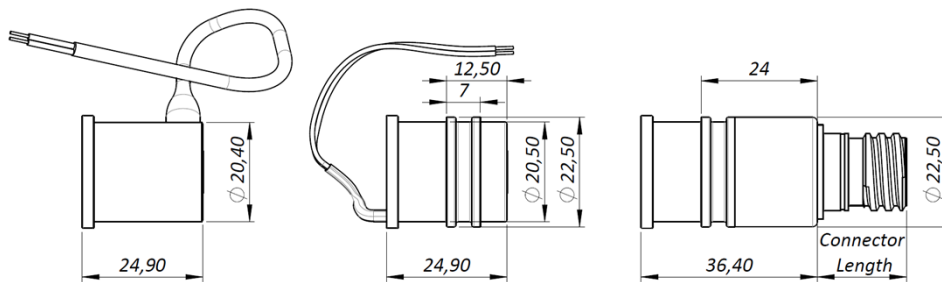


Triangle Shape T

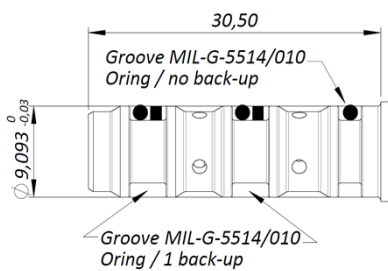


Nut N

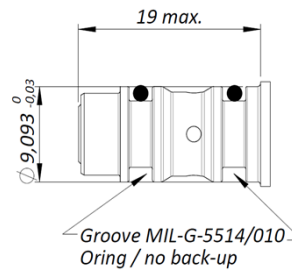
SOLENOID TYPE



DISTRIBUTOR 3-2 NO or NC



DISTRIBUTOR 2-2 NO or NC



ELECTRICAL CONNECTORS



D38999/25YA98PN
Connector Length: 21 mm
Code 25



EN2997/YE10803MN
Connector Length: 21 mm
Code YE



NAS1599/1HB3APN
Connector Length: 12 mm
Code 1H



EV family "MINI" PRESSURE SOLENOID VALVE Standard configurator



Table III - PART NUMBER

BUILD A PART NUMBER

C	D	32NC	25
SOLENOID TYPE	FLANGE TYPE	DISTRIBUTOR TYPE	CONNECTOR TYPE *
90° Exit Wires: S	Diamond Shape: D	- 2/2 Normally close: 22NC	D38999/25YA98PN: 25
Front Face Exit Wires: F	Triangle Shape: T	- 2/2 Normally open: 22NO	EN2997/YE10803MN: YE
Electrical Connector: C	Nut: N	- 3/2 Normally close: 32NC	NAS1599/1HB3APN: 1H
		- 3/2 Normally open: 32NO	* For type C only. Other, please consult.

WEIGHT

From 60 grams for part number FD22NC to 85 grams for part number CN32NC25



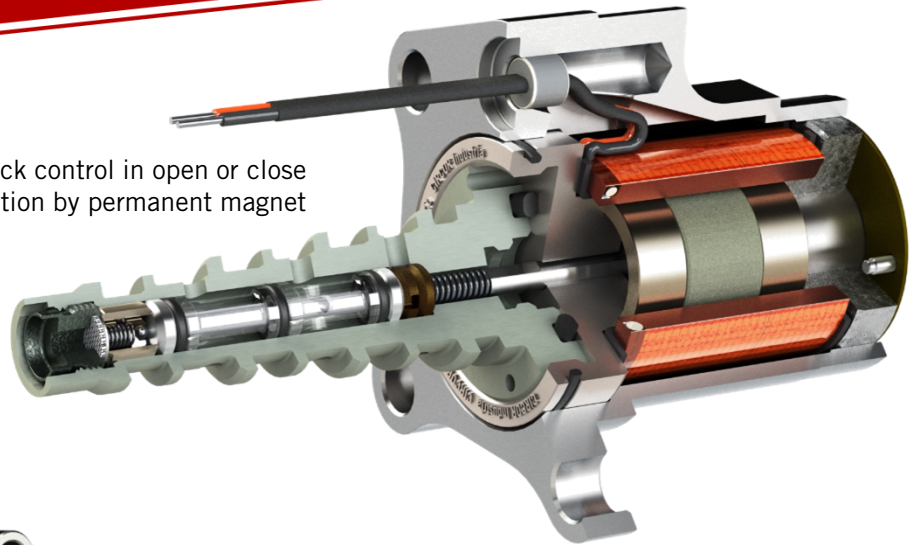
"mini" Solenoid valve FT32NC
With Fluorosilicon Orings
and PTFE back-up ring

"mini" Solenoid valve can be used with various fluids, please consult us for "Orings" code

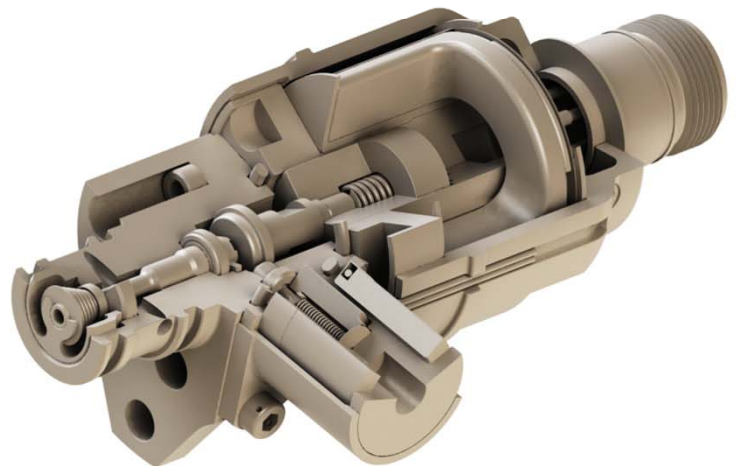


EV family LATCHING SOLENOID VALVE 2 stable positions, no power consumption

Lock control in open or close position by permanent magnet



Lock control in open or close position by balls (CIRCOR Industria patent)



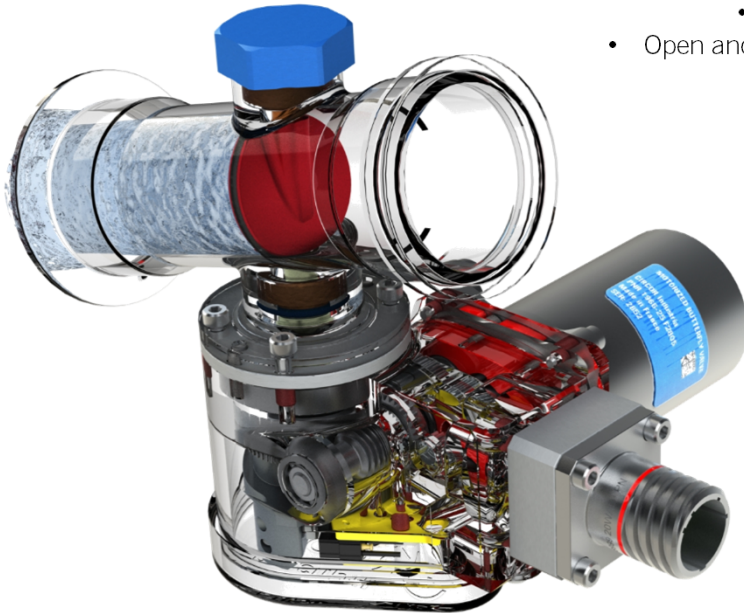
Lock control in open or close position with a secondary solenoid

Applications/ Features:

- All configurations available:
Normally Open, Normally close.
2 Ways, 2 Positions, 3 Ways, 2 Positions.
1 coil or 2 coils (electrical redundancy).
- Low pressure to 350 bar and more.
- Low leakage (about 5 drops / min).
- Seat diameter from 0,6 to 2 mm.
- Flow rate upper than 2 l/min (pressure 206 bar).
- All aircraft fluid.
- High life cycle (until 3.000.000 cycles)
- Certification: RTCA/DO-160, MIL-STD-810.
- Connection: Wire leads or connectors EN2997, MIL-C-38999...
- Working fluid temperature: -55°C to +135 °C.



EV family BUTTERFLY VALVE Fluid Control



Motorized ball valve

- Reduction gear mechanism.
 - Motor flexible coupling.
- Open and Close position detection.



Motorized butterfly valve

- Stepper motor
- Reduction gear mechanism
- Open and Close position detection

Applications/ Features:



Manual butterfly valve

- Cable command

