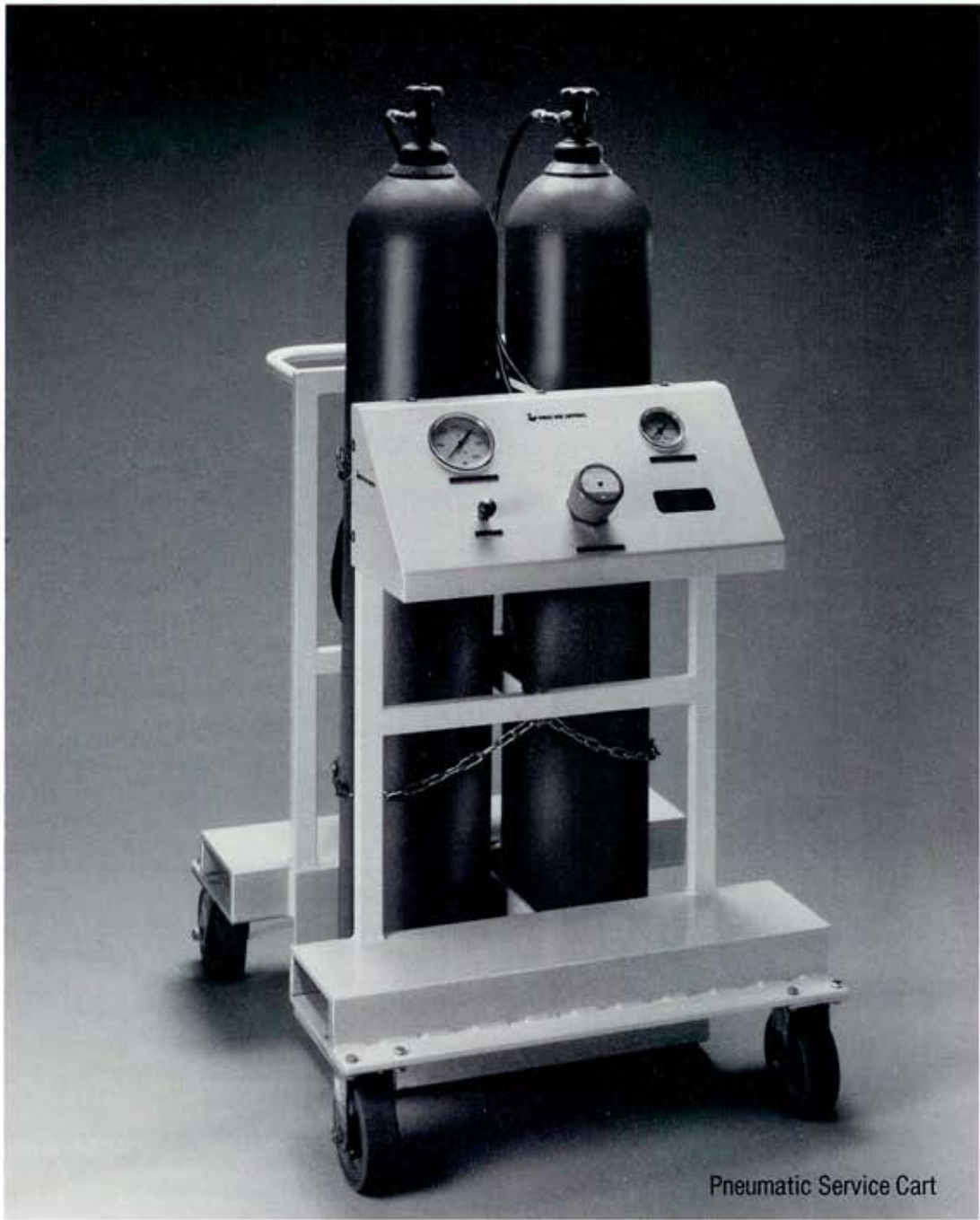




**CIRCLE SEAL CONTROLS**

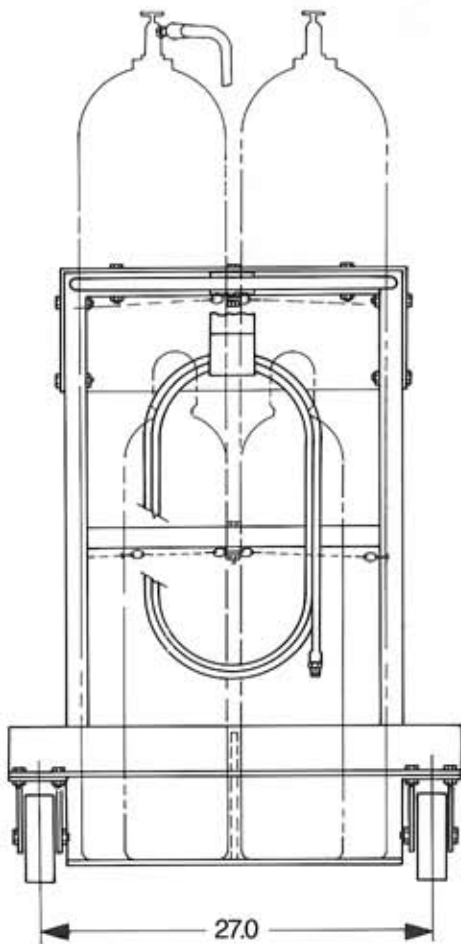
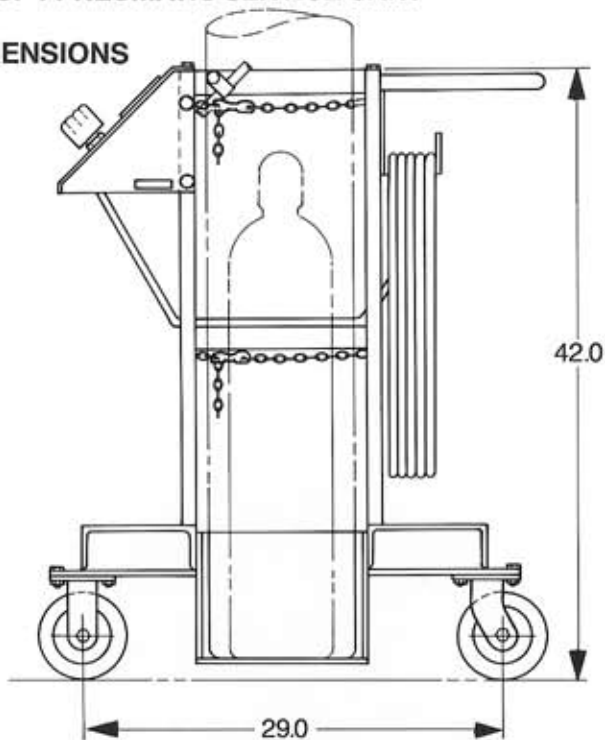
**WE'VE TAKEN THE EXPENSE OUT OF  
QUALITY, SAFETY AND RELIABILITY**



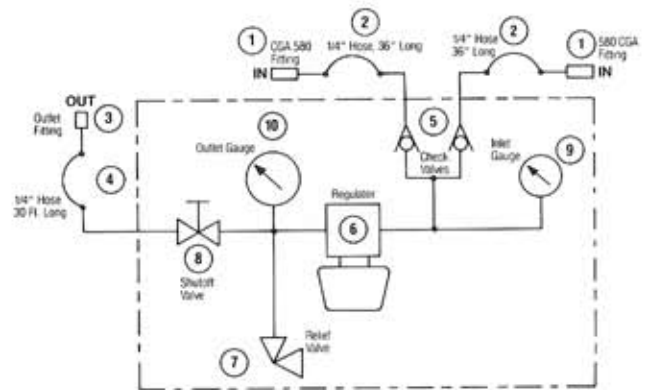
Pneumatic Service Cart

# MC97-1 PNEUMATIC SERVICE CART

## DIMENSIONS



## CIRCUIT DIAGRAMS



## SPECIFICATIONS

Cylinder Connections	1	Two CGA 580 Bottle Connections for Nitrogen Service. Includes sintered bronze filter.
Capacity (Cylinder supplied by user)		Two cylinders to 3600 PSIG (ICC Rating)
Inlet Hose Assembly	2	Two 1/4" Inlet Hoses Three Feet Long
Outlet Fitting	3	One 1/4" NPT Male Outlet Fitting
Outlet Hose Assembly	4	One 1/4" Outlet Hose 30 Feet Long
Check Valves	5	Two Circle Seal Controls — P/N 2359B-2PM Check Valves
Pressure Regulator	6	One Circle Seal Controls—P/N PR50-70-1 (Similar to PR50 Series)
Relief Valve	7	One Circle Seals Controls — P/N 559B-2M-350 Relief Valve
Shutoff Valve	8	One Circle Seals Controls — P/N 9459B-2PP(P) Shutoff Valve
Inlet Gauge	9	One Inlet Gauge 0-5000 PSI One 2 1/2" Dial
Outlet Gauge	10	One Outlet Gauge 0-600 PSI One 3 1/2" Dial
Dimensions		See Drawings
Paint		Standard White Enamel
Weight Without Cylinders		Approximate weight of cart is 340 pounds With shipping skid — 360 pounds

## PRESSURE SYSTEMS

Inlet Pressure	0 - 3600 PSIG
Outlet Pressure	40 - 350 PSIG (standard)*
Relief Pressure	360 PSIG
Gauge Accuracy	3 - 2 - 3% of span

\*Other outlet pressure ranges available.

## SPECIAL FEATURES

Transportable via fork lift.

The caster wheels provide easy maneuverability and stability.

In addition, Booster Pump, Dryer/Humidifier, and Pneumatic Lines can be added as required for special applications.

 **CIRCLE SEAL CONTROLS, INC.**  
A CIRCOR International company

2301 Wardlow Circle, Corona, CA 92880 • Tel (951) 270-6200 Fax (951) 270-6201