



**CIRCLE SEAL**  **SEAL**

**CONTROLS**

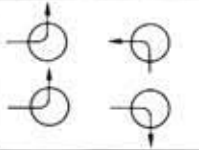
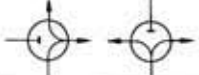
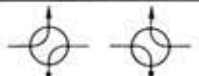
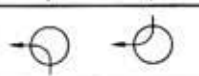
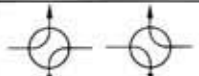
**SELECTOR VALVES**

---

**MANUAL LOW PRESSURE**

Wherever perfect sealing is required, the proven reliability of Circle Seal precision valves provides the one complete answer—a combination of absolute leakproof sealing when closed and virtually maintenance-free operation.

**TECHNICAL CHARACTERISTICS**

PART NUMBER	PORT SIZE	NUMBER OF PARTS	FLOW PATTERN	SERVICE	METHOD OF ACTUATION
P46-395	VARIOUS DUAL 3 WAY VALVES	6		AIR WATER	REMOTE CABLE
P117-395*	3/4"	4		AIR	REMOTE CABLE
P35-418*	1/4"	4		GN <sub>2</sub>	DIRECT MANUAL
P10-418	3/8"	3		OS-45	DIRECT MANUAL
P4-418	1/8"	4		FUELS	DIRECT MANUAL

**MATERIALS**

Body-Aluminum (2024-T4); Cres. (303), as required by service.  
Seals-Synthetic rubber, as required by service.

**OPERATING PRESSURE**

Low pressure during actuation; suitable for high pressure, non-actuated.

**OPERATING TEMPERATURE**

-65 to 165°F or other depending on seals used and system requirements.

**SERVICE**

Air, Helium, Nitrogen, Water, MIL-0-5606, Oronite, OS-45, and other gases or liquids. Not suitable for aromatic or corrosive liquids of cryogenic service.

\*See dimensional drawings on reverse side

**TYPICAL APPLICATIONS**

Air speed indicator systems. Emergency valve for inflatable seal systems. Combination fill and vent valve for wash water systems.

**TYPE OF VALVE**

A manually actuated plug type valve with sealing "O" Rings in specially machined grooves in the face of the plug. Porting in the plug serves to direct or divert flow as required.

**PURPOSE**

To direct flow alternately from one inlet to two or more outlets or from two or more inlets to a common outlet; to reverse flow between two inlets and two outlets; to provide normal flow and bleed or drain flow in a single unit.

**OPERATING CHARACTERISTICS**

Alteration of flow is achieved by 90° rotation of plug. Sealing "O" Rings prevent leakage across ports and provide dead tight shutoff of isolated ports.

Design permits stacking to provide simultaneous actuation of two or more systems.

P-395 types are basically full ported to provide minimum flow restriction.

P-418 types have restricted ports for sensing or other low flow systems.

# SELECTOR VALVES MANUAL LOW PRESSURE

**P117-395**

**TYPE OF VALVE**

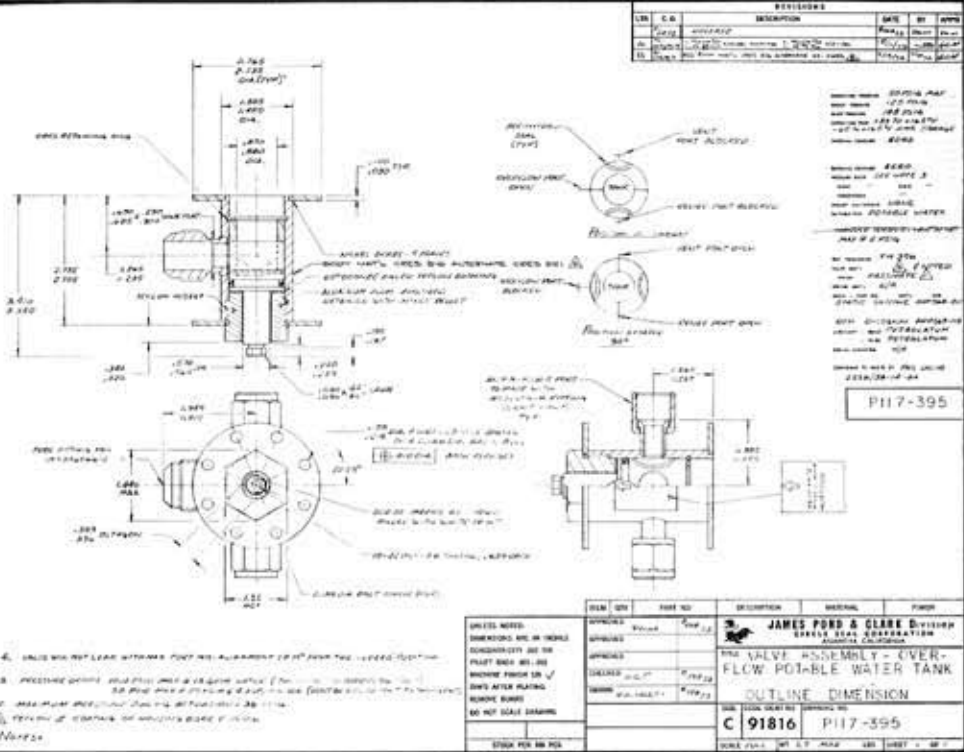
CABLE ACTUATED 3-Way Selector Valve

**APPLICATION**

Aircraft Potable Water Supply Tank Overflow Control.

**OPERATING CHARACTERISTICS**

Valve is manually actuated to alternate positions (90°) by flexible cable connected to handle that mates with octagon shaped plug extension. Low operating torque insures easy actuation. In the "closed" position valve "vents" the upper area of potable water tank to the overflow system. In the "open" position the valve "closes" the overflow system and "opens" the tank to the Pneumatic System to permit pressurization of the potable water tank.



**P35-418**

**TYPE OF VALVE**

MANUAL 3-Way Selector Valve

**APPLICATION**

Spacecraft Habitability Support Systems (HSS) water subsystem checkout and sterilization console.

**OPERATING CHARACTERISTICS**

"O" Rings in plug prevent external leakage and leakage across ports. Flow passes through adjacent ports. 90° rotation of handle switches flow path.

